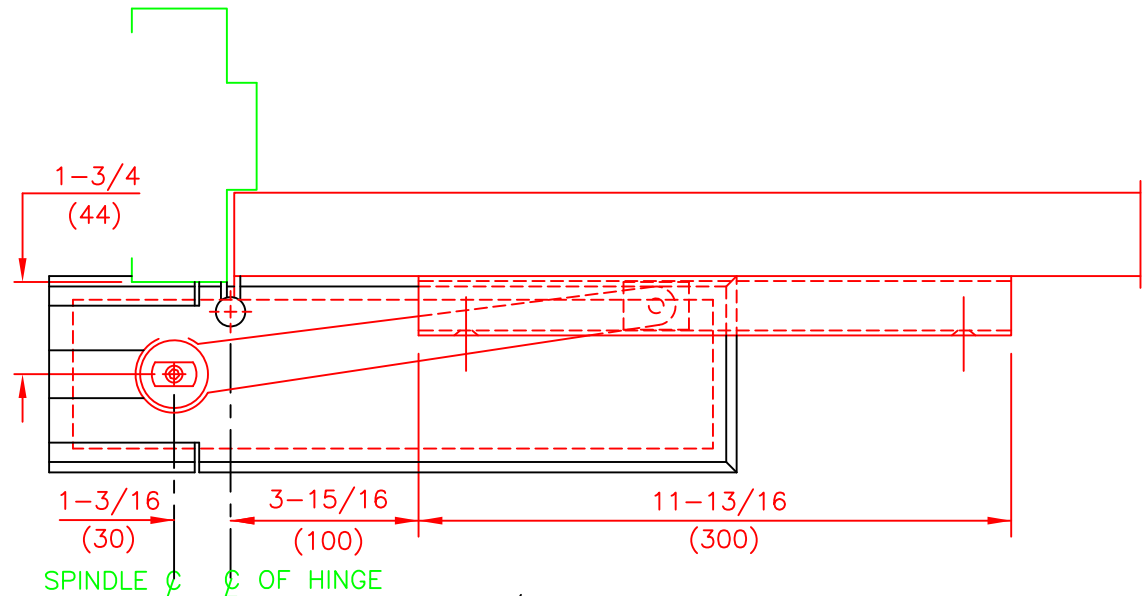
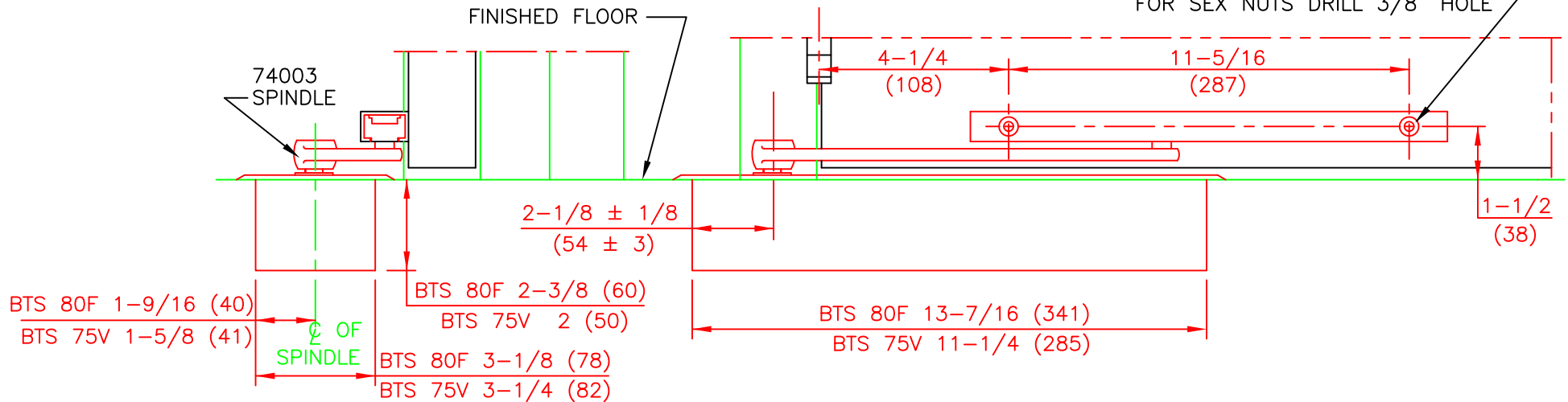


NOTE:

1. RIGHT HAND DOOR SHOWN.
2. DO NOT SCALE DRAWING.
3. DIMENSIONS ARE IN INCHES/(MM).
4. FOR THRESHOLD APPLICATIONS, USE SPINDLE 74012 AND MEASURE FROM TOP OF THRESHOLD FOR TRACK LOCATION, (1/2" THRESHOLD ONLY).
5. MAXIMUM DEGREE OF OPENING 145°. FOR DOORS OPENING OVER 145°, AN AUXILLIARY STOP MUST BE INSTALLED.
6. DOOR HUNG ON 4-1/2" WIDE BUTT HINGES.
7. SEX NUTS RECOMMENDED FOR ATTACHMENT OF COMPONENTS ON UNREINFORCED, COMPOSITE OR LABELED FIRE DOORS.



FOR 1/4-20 MACHINE SCREWS USE No.7 DRILL
 FOR WOOD SCREWS USE 5/32" DRILL
 TWO (2) HOLES IN DOOR FOR CHANNEL
 FOR SEX NUTS DRILL 3/8" HOLE



FLOOR CLOSER MODELS: BTS 75V/IF, BTS 80/IF WITH 7451N SLIDE ARM
 (PULL SIDE INSTALLATION)
 TRACK SURFACE APPLIED TO DOOR
 FOR USE ON NON-RATED OR UP TO 3 HR. RATED DOORS

